

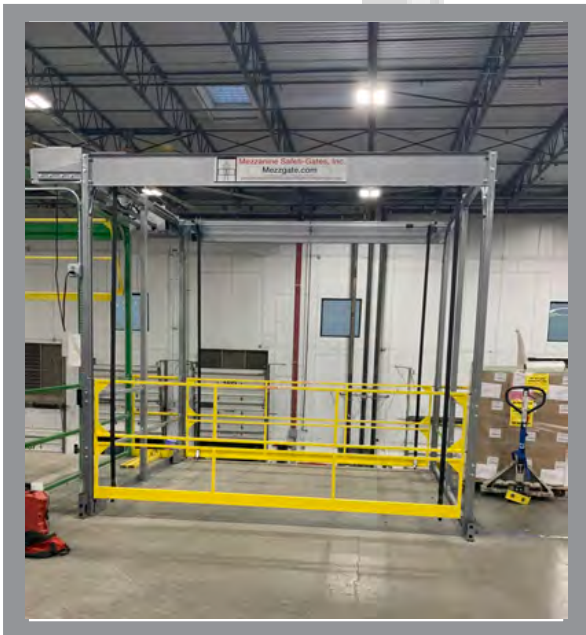
TOTAL CONTROL ACCESS (TCA) SAFETY GATE



The Roly® Total Control Access (TCA) pallet drop safety gate protects employees working on elevated pallet drop areas, ensuring the ledge is always guarded. The TCA is a power operated, dual-gate system but the gates don't operate in tandem; instead when one gate is open the other stays fully closed and is prevented from opening until the other fully closes.

Using a proprietary connection and technology system for fully-automatic operations, employees have no-touch, ergonomic fall protection systems that integrate with warehouse WMS and automated equipment.

A] YdkY¶ Iq_ YI] ¶ gj 2
 @a` ngdre] ¶ nclab] fl [] fl] jk
 9m tge YI] \ ` o Yj] ` gmk] ¶ Yf \ ` e YI] j ¶ d ¶ Yf \ df _] f n ¶ g f e] fl k



- Photo eyes and sensors to detect objects or errors
- Built-in safety measures if errors occur to prevent the gates from dropping quickly
- 9Zadq'lg'af'l]_jYI] kY¶ Iq_ YI] ¶ flg'OE K' lg [Yhlm] ¶ gh] j Yl ¶ f YdYf \ ` hjg \ m] l \ YIY
- Meet OSHA and ANSI standards for fall protection
- Available in powder coated mild or electro-polished stainless steel
- Visit MezzGate.com to watch a TCA safety gate video and read case studies

Scan the QR Code to visit MezzGate.com and watch a TCA safety gate video